

# Grand Canyon State Chapter of The Association for Radiologic and Imaging Nurses



*An official state chapter of the  
Association for Radiologic and Imaging  
Nurses*  
[www.azradiologyrn.net](http://www.azradiologyrn.net)

**Come Join the State Chapter**

## *In Our “January Education Conference”*

**January 14, 2012 – 9:00am until 3:15pm**

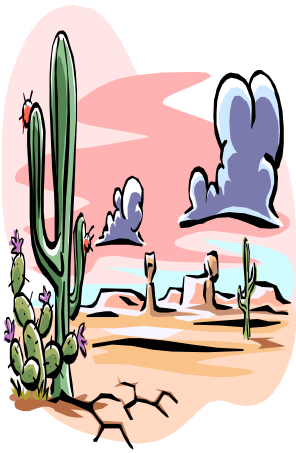
**Banner Boswell Medical Center**

**10401 W. Thunderbird Blvd.**

**Sun City, Arizona**

<b>9:00 – 9:30</b>	<b>Registration and continental breakfast</b> <b>Welcome and Introductions</b>
<b>9:30 – 10:30</b>	<b>Dr. Haugland, MD Interventional Radiologist</b> <b>“Management of Predominantly Hepatic Metastatic Disease”</b>
<b>10:30 – 10:45</b>	<b>Break</b>
<b>10:45– 11:45</b>	<b>Greg Olson B.S., N.A.S.P.E./ Certified Cardiac Device Specialist, C.R.T.</b> <b>“Meeting the Need for MRI; MRI Conditional Pacemakers”</b>
<b>11:45 – 12:45</b>	<b>Lunch</b>
<b>12:45 – 13:45</b>	<b>Jennifer Velez, B.S. Math/Physics, R.S.O.</b> <b>“Radiation Safety Issues in Nursing”</b>
<b>13:45 – 14:00</b>	<b>Break</b>
<b>14:00 – 15:00</b>	<b>Lauren Miller RN, MSN-L, CRN</b> <b>“DaTScan”</b>
<b>15:00 – 15:15</b>	<b>Questions / Evaluations / CEU certificates</b>

RSVP to [Lauren.Miller@bannerhealth.com](mailto:Lauren.Miller@bannerhealth.com)



# Grand Canyon State Chapter of The Association for Radiologic and Imaging Nurses



*An official state chapter of the  
Association for Radiologic and Imaging  
Nurses*  
[www.azradiologyrn.net](http://www.azradiologyrn.net)

## **Directions to Banner Boswell Medical Center:**

### **From Tucson:**

**Take I-10 W toward Phoenix**

**Merge onto AZ-101 Loop North via exit 133B**

**Continue on 101 Loop North to US 60West/Grand Ave.**

**Take US 60 West, turn right onto N. 103<sup>rd</sup> Ave. then**

**1<sup>st</sup> left into parking lot of Banner Boswell Medical Center**

**Support Services/Sun Health Building on the right**

### **From Yuma:**

**Take I-10 E to AZ-101 Loop North-Exit 133B**

**Merge onto 101 Loop North to US 60West/Grand Ave.**

**Take US 60 West, make right onto N. 103<sup>rd</sup> Ave.**

**1<sup>st</sup> left into parking lot of Banner Boswell Medical Center**

**Support Services/Sun Health Building on the right**

### **Cost:**

**GCSC members: Free**

**Non members: \$10.00**